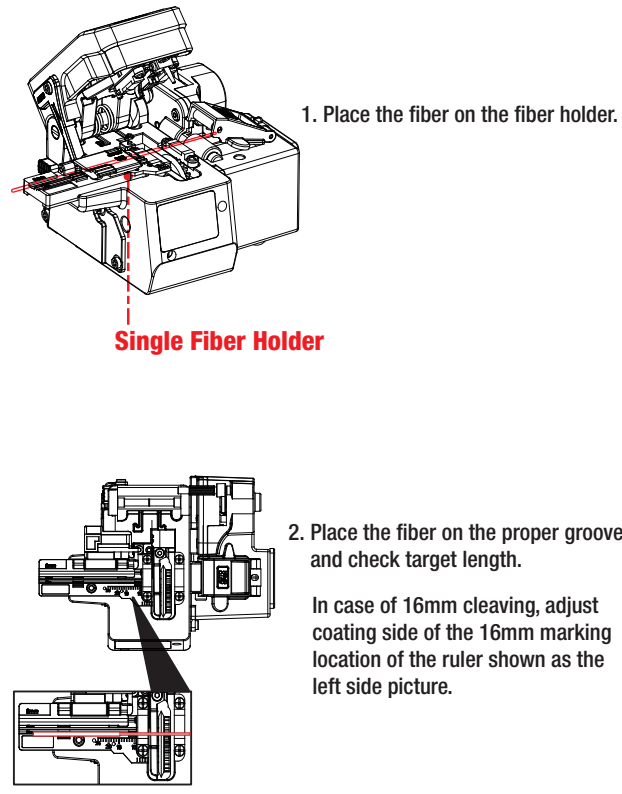
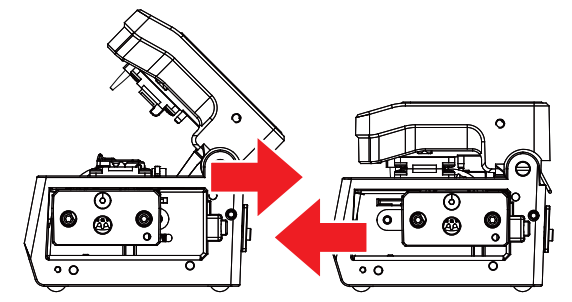


Operating procedure



3. Cleave the fiber with one touch the cover and then the scrap will be collected automatically.



Automatic Cleaving and Reset!



Safety warnings and precaution

Thank you for choosing V10Pro. In order to use V10Pro properly, be well aware of this manual before use.

Warnings, if do not follow this manual, user might get injured or damaged on product.

Precaution:

1. Disassemble or put oil on main body might occur damage on the product.
2. Drop or percussion might damage the product.
3. Do not touch the blade with finger to avoid injury and damage on the blade.
4. Fiber and scrap are able to be dangerous, Clean up immediately.
5. Properly place the fiber debris, prepare bin for fiber scrap.
6. If there is any problem in use, stop operating and contact INNO Service Center.

INNO INSTRUMENT, Inc.

E-22F,30,Songdomirae-ro,Yeonsu-gu, Incheon21990,Republic of Korea
Tel : +82-32-837-5600
Fax : +82-32-837-5601

Product Overview

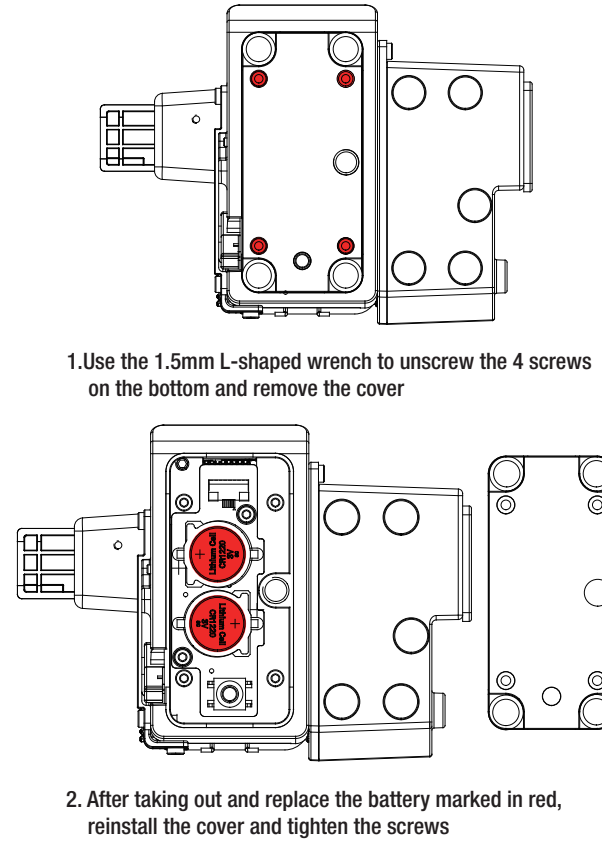
Cladding diameter	125µm
Number of Core	Single(0.25 to 0.9mm and 2 to 3mm and drop cable) up to 16 Ribbons
Cleaved length	5mm(250µm coating diameter) 10mm(> 250µm coating diameter)
Dimensions	103(W)X76(D)X63(H)
Weight	300g

Cleaver	1
Operation Manual	1
M2 Wrench	1
Cleaver Case	1
Brush	1

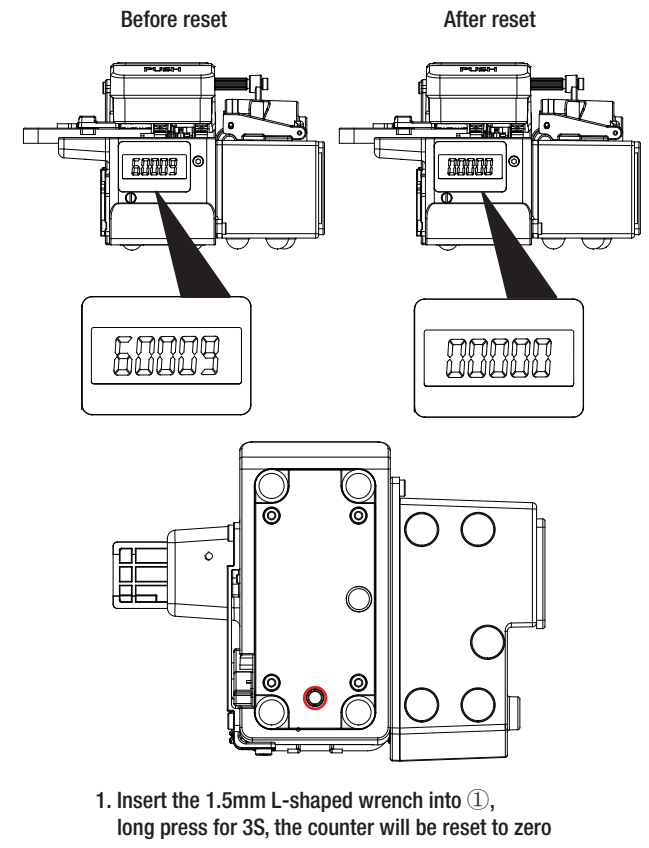
Optional Accessory

Blade	B80
Fiber Holder	CFH-40

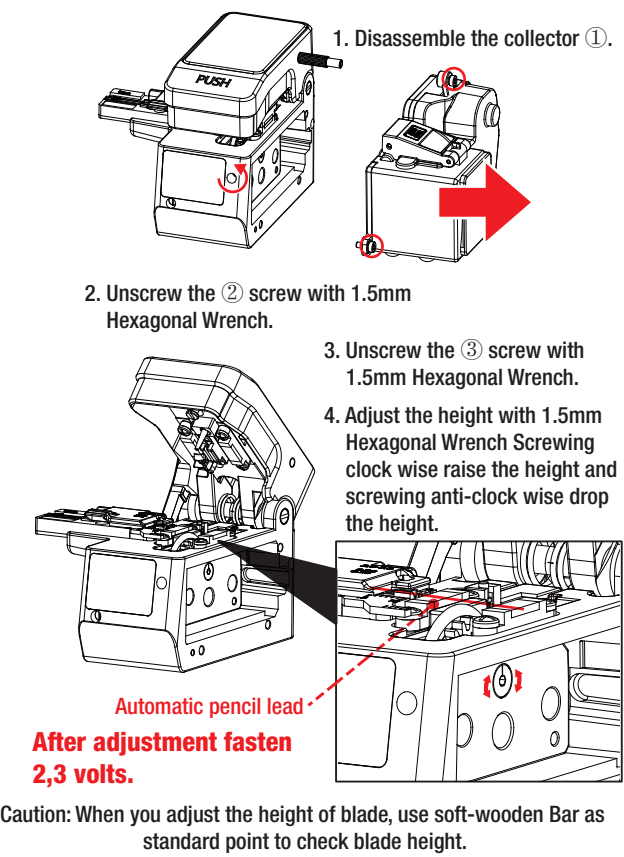
Battery replacement



Counter reset

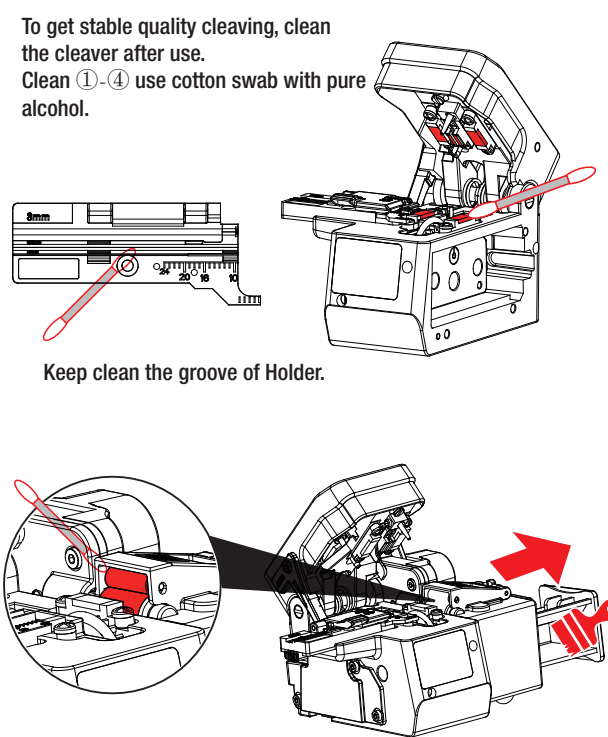


Blade height adjustment

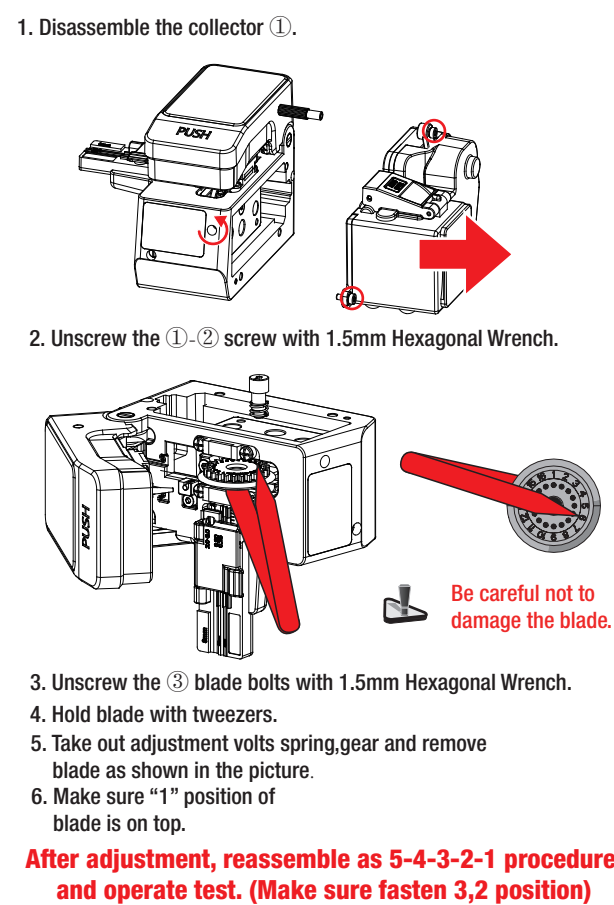


Caution: When you adjust the height of blade, use soft-wooden Bar as standard point to check blade height.

Maintenance

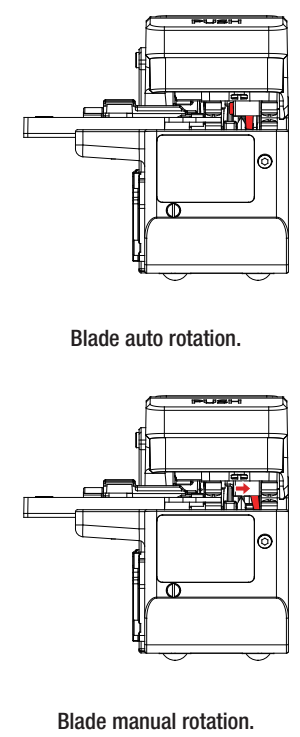


Blade Replacement

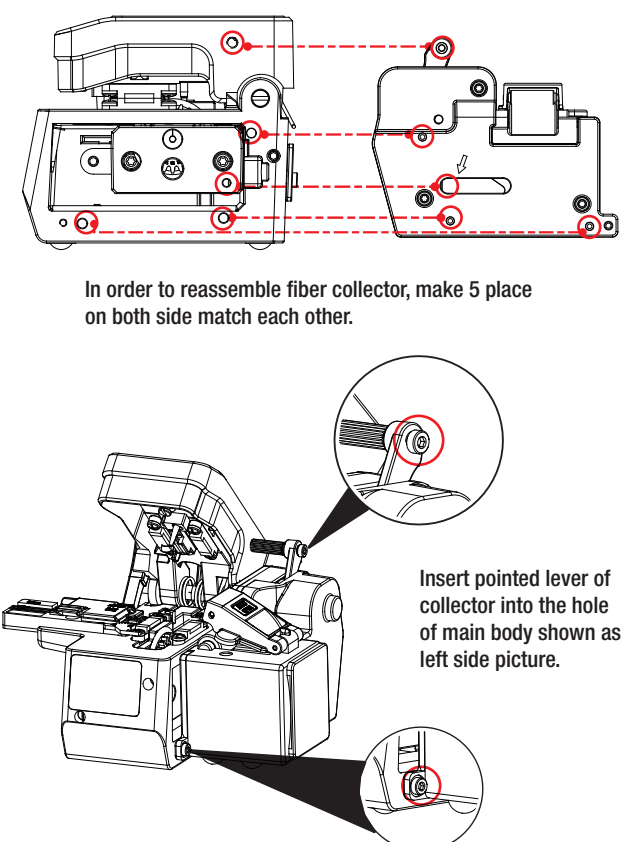


After adjustment, reassemble as 5-4-3-2-1 procedure and operate test. (Make sure fasten 3,2 position)

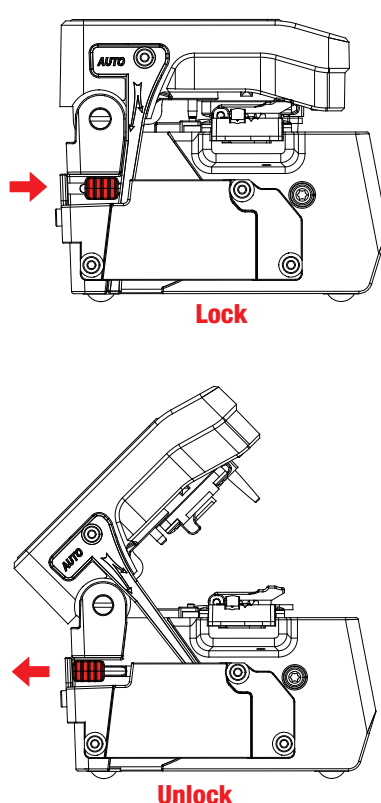
Blade rotation



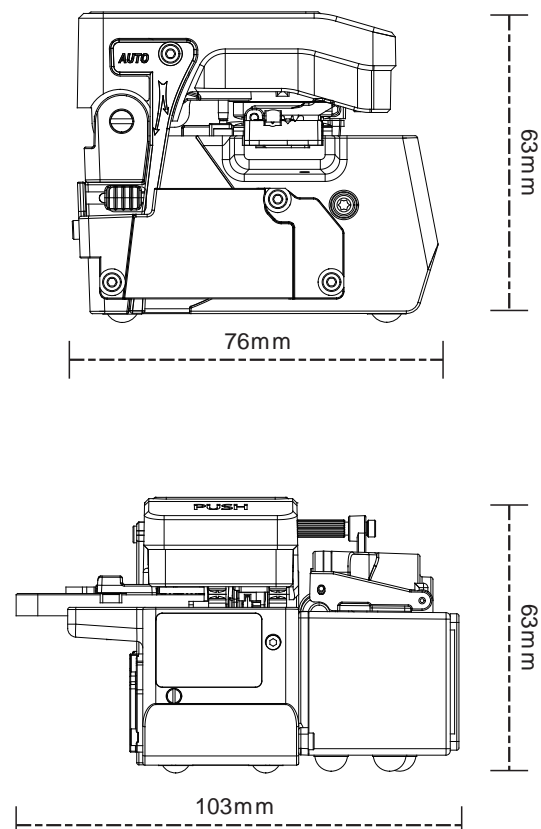
Fiber Collector Assembly



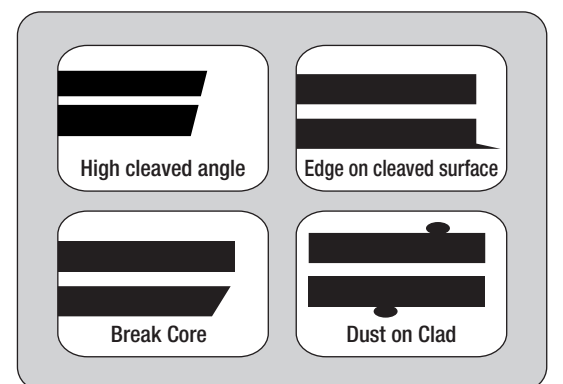
Cleaver Lock



Dimensions



Trouble shooting



Cleaving problem might occurred by these reasons:

1. Improperly place the fiber. -- Place fiber properly and straightly.
2. The height of blade is too high. -- Adjust the height of blade.
3. Dust on holder or clamp. -- Clean holder and clamp.
4. Dust on the fiber. -- Restripping and clean the fiber with alcohol.

If you have problem in use, please contact INNO Local Distributors.