

# mini2

## Most Accurate Compact OTDR

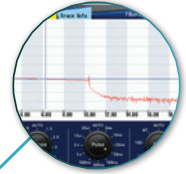
- SOLA (Smart Optical Link Analyzer)
- 5" Touch Screen with Smart GUI
- 8GB Internal Storage
- Built-In VFL and Light Source
- Lightweight and Handheld



# CHARACTERISTICS



Measure Fiber Optical Link



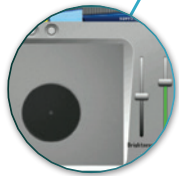
Simplify the Test Process



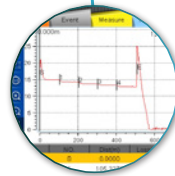
5" Touch Screen  
Smart GUI  
High Brightness  
Resolution of 800x480



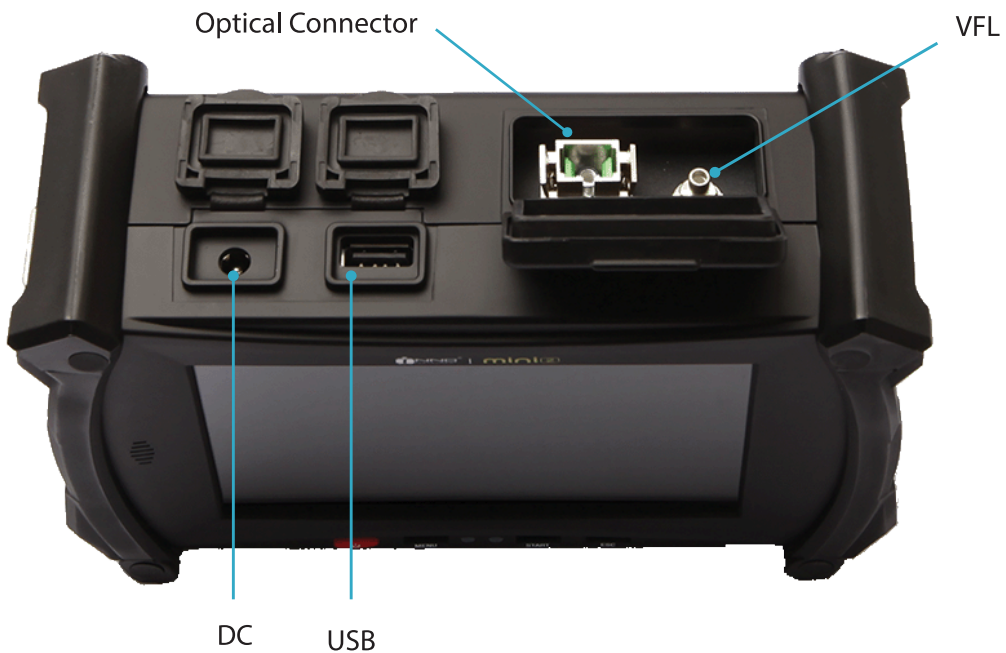
Identify Fiber Fault Location

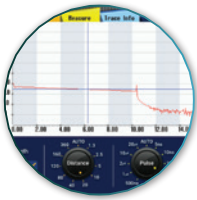


Magnify the Fiber End Face



Effective Tool for Managing Test Result Files





### OTDR

OTDR-mode enables you to measure distance, loss, reflectance, attenuation, ORL and sum on an optical fiber. When operating Auto-mode, test is automatically done without additional setting. The test results can be stored in 3 types of format (image, SOR, PDF).



### SOLA

SOLA (Smart Optical Link Analyzer), an application that simplifies the measure process, shows you an accurate test results by utilizing advanced algorithm and optimal multiple pulse width. You don't have to set complicated parameters, which means even unskilled workers can make measurement with great ease.



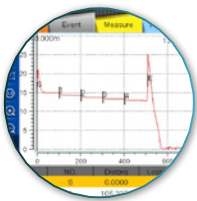
### VFL

VFL (Visual Fault Locator) visually identifies the location of bending point, faulty connector or splicing point by emitting a bright red laser (it can reach a maximum of 10km), and this is a must function that workers need on the field.



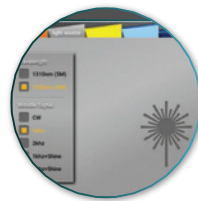
### FIBER INSPECTION

Testing fiber end face on connectors with FIBER MICROSCOPE is very important, because a polluted or damaged connector can cause critical damage to test results as well as testing port.



### FILE MANAGER

File Manager can provide powerful file management that users can manage their files conveniently



### LIGHT SOURCE

Invisible light source (1310/1550/1625nm live port) can provide the following sources of light: CW, 1kHz, 2kHz modulated and 1kHz & 2kHz blink.

## ORDERING INFORMATION

XXX - XXX - XXX - XXX - XXX - XXX - XXX

### MODEL

OTDR: MINI2

### OPTICAL CONFIGURATION

SMF1: 32/30dB (1310/1550nm)

SMF2: 30dB (1625nm Live)

### BASIC SOFTWARE

OTDR: OTDR application only

OS: OTDR & SOLA application

### FIBER CONNECTOR

CNT1: FC/APC    CNT4: FC/UPC    CNT7: ST/UPC

CNT2: SC/APC    CNT5: SC/UPC

CNT3: LC/APC    CNT6: LC/UPC

### LIGHT SOURCE

LS0: without VFL & Light Source

LS1: with VFL

LS2: with Light Source

LS3: with VFL & Light Source

### MICRO SCOPE

MS0: without Micro Scope

MS1: with Micro Scope - V20

### HARD CASE

HC0: without Hard Case

HC1: with Hard Case

## DESCRIPTION

The MINI2 OTDR is used in the installation and maintenance of fiber optic cables. Features of the MINI2 OTDR include high precision test capabilities, fast response times, and easy to learn operation. The multi-point capacitive touch screen allows for user-friendly operation. The MINI2 OTDR offers accurate and fast test results and creates a report automatically. The MINI2 OTDR's compact design, delivers a lightweight, truly hand-held device.

## TECHNICAL SPECIFICATIONS

Items	Specifications
Model	mini2
Display	5 inches, High Brightness TFT LCD, resolution of 800×480
Distance Unit	m /km / mile / ft
Dynamic Range	SMF1 : 32/30dB (1310/1550nm) / SMF2 : 30dB (1625nm Live)
Range settings	km: 1.3, 2.5, 5, 10, 20, 40, 80, 120, 160, 260 mile: 0.81, 1.55, 3.11, 6.22, 12.4, 24.8, 49.6, 74.6, 99.4, 161.5
Pulse width	5ns, 10ns, 20ns, 50ns, 100ns, 200ns, 500ns, 1μs, 2μs, 10μs, 20μs
Dead zone (Event/Attn./PON)	1m / 5m / 50m
Distance accuracy	± (1m + Distance × 2.5 × 10 <sup>-5</sup> + Sampling resolution)
Linearity	0.03dB
Sampling points	110,000 points
Refractive index	1.000000 - 2.000000 (step: 0.000001)
Splitting ratio	Up to 1:32 splitter
Resolution	0.04m ~ 10.24m
Loss readout resolution	0.001dB
Battery capacity	Operating Time : Up to 12hours
File format	SOR, BMP, JPG, GDM, SOLA, PDF
External connection	USB 2.0
Compatible connector	APC (FC, SC, LC), UPC (FC, SC, LC, ST)
Power supply	AC Input 100-240V, 50-60Hz / DC Input 19V, 3.42A Port: 2.5mm ferrule type
VFL	Wavelength: 650m ± 10 nm Distance: Up to 15km Output power: 20mW
Light Source	Operating wavelength: 1310nm / 1550nm ±10nm
Light Source Output Power	-8dBm
Dimension	115 x 173 x 64 mm (excluding rubber bumper)
Weight	0.90kg (with battery)

## WEIGHT AND DIMENSIONS



## ENVIRONMENTAL CONDITION

Items	Specifications
Operating Conditions	Humidity: 0 to 95%, noncondensing Temperature: -10 to 50°C
Storage Conditions	Humidity: 0 to 95%, noncondensing Temperature: -20 to 60°C

## PACKAGE

Model/Part No.	Description	Quantity
ACC-25 / JS-180300	Power Cable/AC Adapter	1ea
Soft Case	Carrying Case	1ea
	Shoulder Strap/Touch pen	1ea
	Calibration Certificate	1ea

**i** INNO Instrument does not accept responsibility for damages arising from misuse of the product.

The Information on this catalog is subject to change without prior notice.