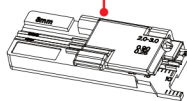


# V12 FIBER CLEAVER

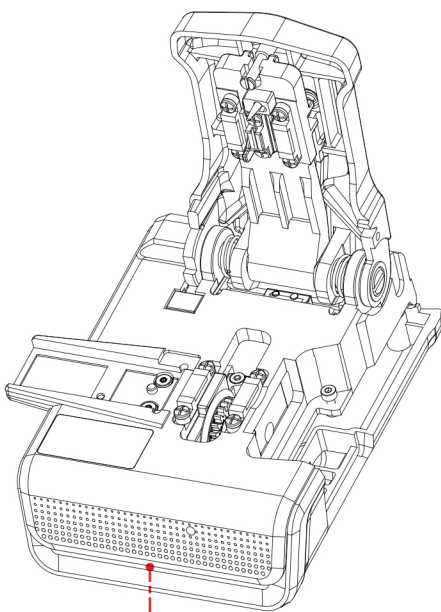


## Operation Manual v.1.0

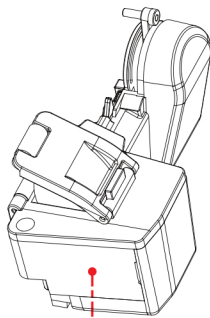
Single Fiber Holder



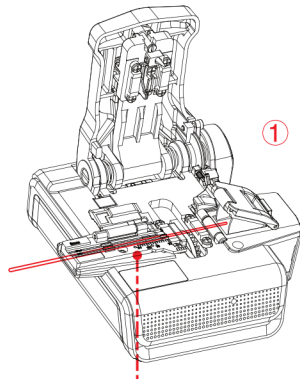
Main Body



Automatic Fiber Collector



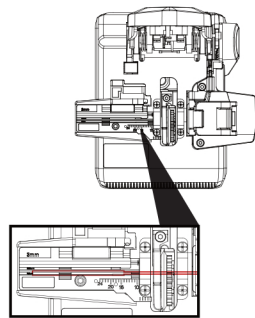
### Cleaver Operation



①

1. Open the fiber holder lid

Single Fiber Holder



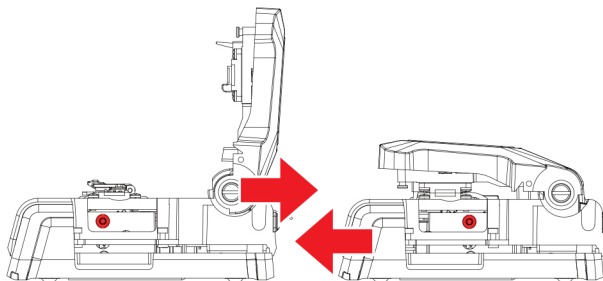
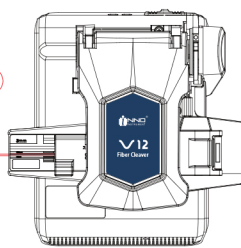
②

2. Place the fiber in the appropriate groove and adjust its position for the required cleave length

**Tip:** To achieve 16mm cleave length, the edge of the fiber coating should align with the 16mm marking on the ruler

③

3. Cleave the fiber by closing the lid/cover of the cleaver. The shard should be automatically collected into the trash bin



### Cleave and Reset

Fiber cleaved length: Clad Length Coating Length

### Safety warnings and precautions

Thank you for choosing V12.  
To ensure safe and effective use of this device, it is essential to thoroughly read and understand this manual before operation.

**Important Safety Warning:**  
Failure to adhere to the guidelines in this manual may result in personal injury or damage to the product.

#### Precautions:

- Do Not Disassemble or Lubricate:** Attempting to disassemble or apply oil to the main body of the cleaver can lead to product damage.
- Handle with Care:** Dropping or subjecting the cleaver to impact can impair its functionality.
- Blade Safety:** Avoid contact with the blade. Touching the blade can cause injury and may damage the blade.
- Fiber and Shard Management:** Fibers and shards are hazardous. Promptly clean and dispose of any debris to prevent accidents.
- Disposal of Fiber Debris:** Ensure proper disposal of fiber shards. Have the bin ready for safe disposal.
- Service and Support:** In case of any operational issues, cease use immediately and contact the INNO Service Center for assistance.

#### INNO INSTRUMENT, Inc.

E-22F,30,Songdomirae-ro,Yeonsu-gu,  
Incheon21990,Republic of Korea  
Tel : +82-32-837-5600  
Fax : +82-32-837-5601

### Product Specification

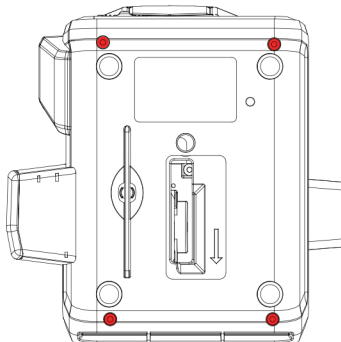
Cladding diameter	125um
Number of Core	Single(φ0.25 to 0.9mm and 2 to 3 mm and drop cable) up to 16 Ribbons
Cleaved length	5 mm(≤ 250 um coating diameter) 10 mm(> 250 um coating diameter)
Dimensions	H: 55.0 W: 103.5 D:106.5 mm
Weight	319g

Cleaver	1
Operation Manual	1
1.5mm(1/16")Hex Wrench	1
Flat-head Screwdriver	1
Cleaver Case	1
Brush	1

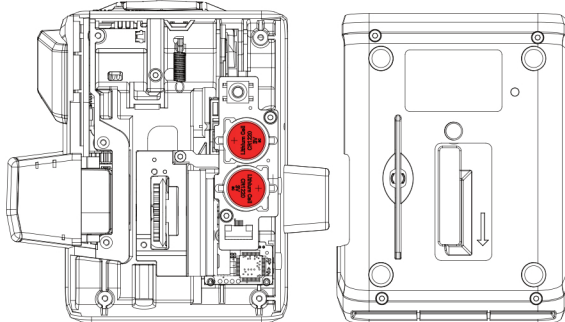
### Optional Accessory

Blade	B80
Fiber Holder	CFH-40

### Battery Replacement



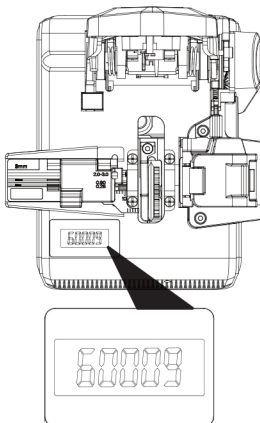
1.Use the 1.5mm L-shaped wrench to unscrew the 4 screws on the bottom and remove the cover



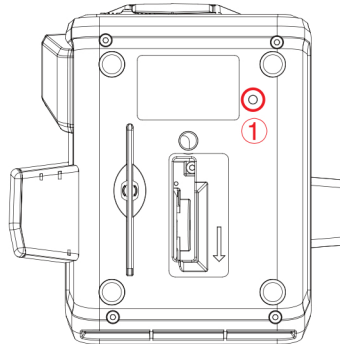
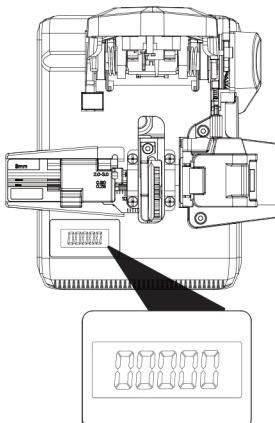
2. After replacing the batteries (marked in red), reinstall the cover and tighten the screws (point 1)

### Counter Reset

Before reset

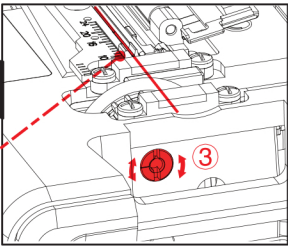
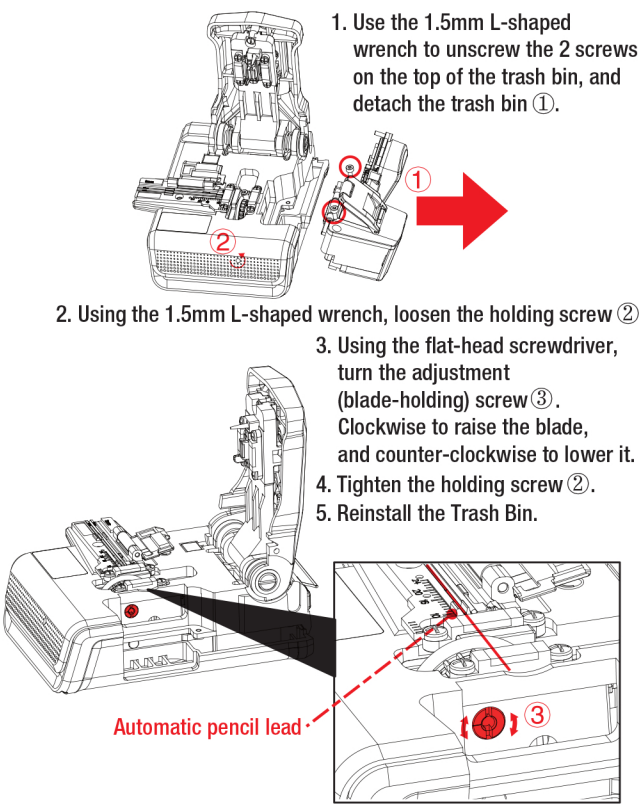


After reset



1. Insert the 1.5mm L-shaped wrench into the slot ①, press and hold for 3 seconds. The counter will be reset to 0

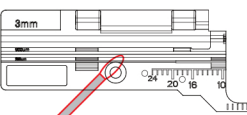
### Blade Height



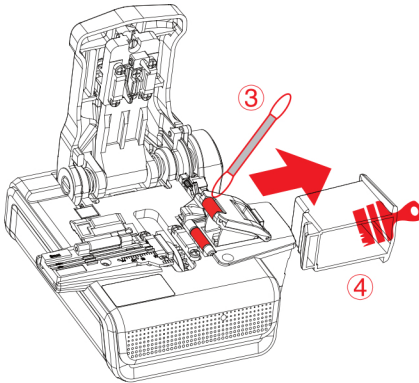
### Maintenance

To ensure stable and consistent operation, the cleaver should be kept free of contamination.

Using a cotton swab with alcohol (IPA), clean components ①-④.

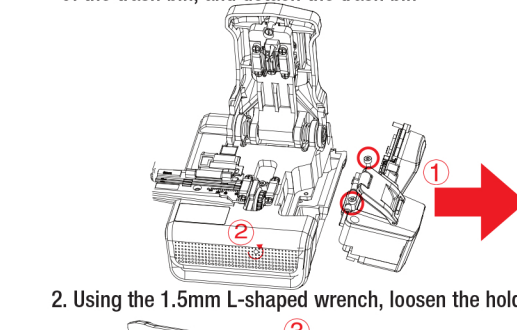


The grooves of the fiber holder should be free of any debris or residue.

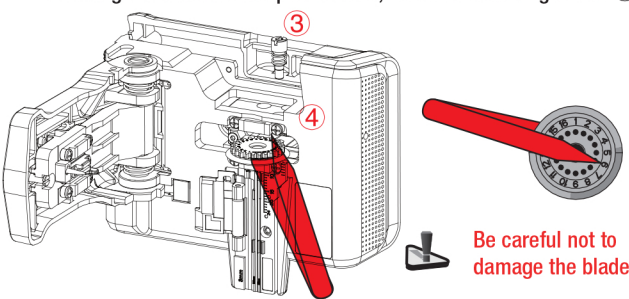


### Blade Replacement

1. Use 1.5mm L-shaped wrench to unscrew the 2 screws on the top of the trash bin, and detach the trash bin



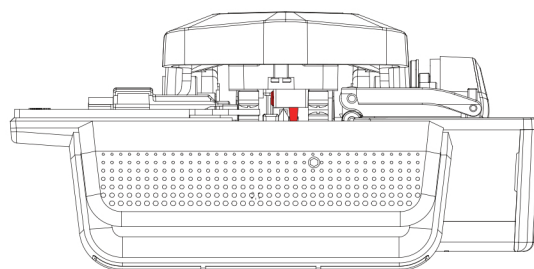
2. Using the 1.5mm L-shaped wrench, loosen the holding screw ②



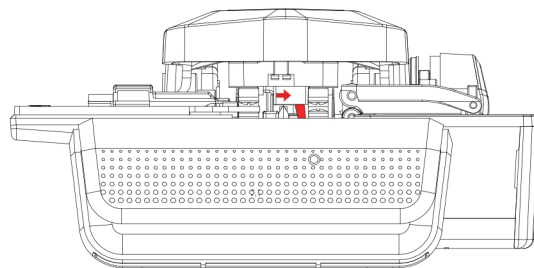
Be careful not to damage the blade.

3. Unscrew the blade-holding screw ③ with the flat-head screwdriver and remove the screw.  
4. Remove the blade.  
5. Reinstall the blade gear onto the new replacement blade.  
6. Reassemble the blade and install the trash bin.  
7. Make sure to tighten the screws (3 and 2, in order).

### Blade rotation

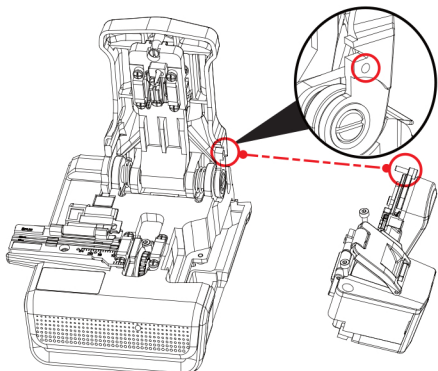


Auto Blade Rotation Mode

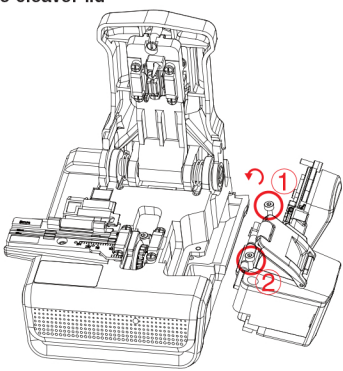


Manual Blade Rotation Mode

### Fiber Collector Assembly

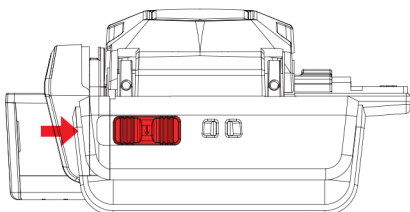


1. Make sure the Fiber Collector Lever is attached to the cleaver lid

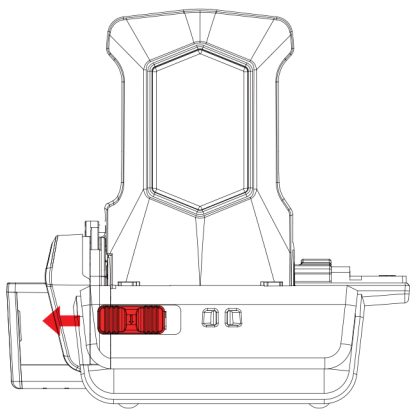


2. Use the 1.5mm L-shaped wrench to do or undo the 2 screws on the top of the trash bin, and attach or detach the trash bin

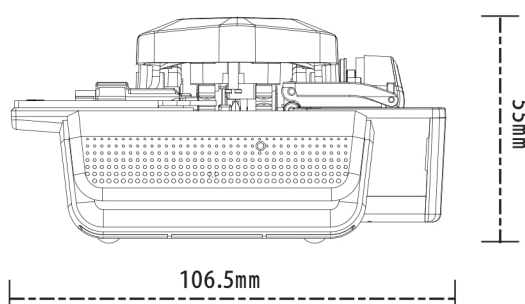
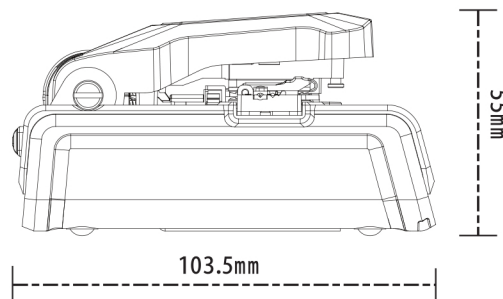
### Cleaver Lock



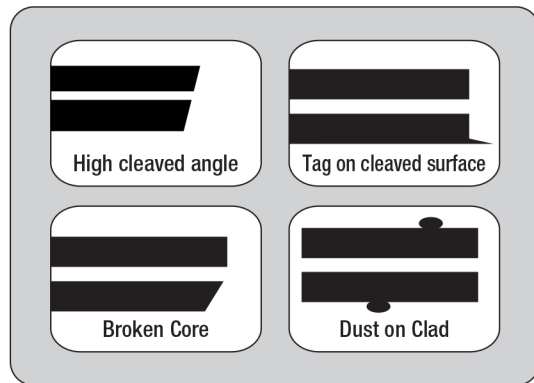
Lock



Unlock



### Troubleshooting



If you encounter cleaving problems, consider these common issues and solutions:

- Fiber Placement:** Ensure the fiber is properly and straightly placed.
- Blade Height:** Adjust the blade to the correct height.
- Holder/Clamp Dust:** Clean any dust from the holder and clamp.
- Fiber Dust:** Re-strip and clean the fiber with alcohol.

For further assistance,  
contact the INNO Service Center.